

**Year 10 Music 2016**  
**Theme and Variation**

**TASK 5 Composition**

**NAME:**

Date Set: Monday, 5 September

Teacher: Miss O'Callaghan

Draft Due: Friday, 7 October

Result:

Date Due: Friday, 21 October

**Progress checks:**

|          |  | <b>Mark when completed</b> |
|----------|--|----------------------------|
| <b>1</b> | Theme chosen, harmonised, basic accompaniment completed in Sibelius; plan and sketches for 1 <sup>st</sup> variation |                            |
| <b>2</b> | 1 <sup>st</sup> variation complete, plan and sketches for 2 <sup>nd</sup>  |                            |
| <b>3</b> | 2 <sup>nd</sup> variation complete   |                            |

**Task:**

Choose one of the attached 8 bar melodies. Use this melody as the theme for a composition in Theme and Variations form. Write two contrasting variations for your theme. Your composition should demonstrate your understanding of melodic writing, keyboard accompaniment styles, transposition, harmony and variation. Your initial workings of ideas must be cited on manuscript paper, however, your draft and final copy must be submitted as a Sibelius file.

**Method:**

- ♪ Harmonise your chosen melody
- ♪ Create a basic accompaniment style for the theme
- ♪ Plan to use 3 methods of variation in each variation eg.
  - Key (this would involve transposition)
  - Tonality (this may involve re-harmonising the original melody)
  - Metre (e.g. simple to compound, or duple to triple)
  - Pitch / Contour / range
  - Melodic ornamentation
  - Inversion
  - Rhythm (this could include syncopation, dotted rhythms, augmentation, diminution, repetition, pause)
  - Articulation
  - Chromaticism
  - Mood (different combinations of musical elements will help to create changing moods)
  - Tempo
  - Dynamics
  - Form / Structure
  - Accompaniment
  - Texture

- ♪ Remember that this is a piano solo, not a piano accompaniment. The melody and the accompaniment are played by the one instrument
- ♪ Progress checks need to have ideas on manuscript, a written plan of the 3 elements you plan to vary, and the indicated portion completed in Sibelius
- ♪ Progress checks and draft dates will be strictly adhered to

| <b>CRITERIA</b>  | <b>A</b>   | <b>B</b>  | <b>C</b>   | <b>D</b>  | <b>E</b>   |
|--|--|---|--|---|--|
| <b>Technical Skills</b><br>Student gives appropriate consideration to layout, piano scoring techniques and idiomatic writing.      | Skillfully achieves all criteria to produce a musical and cohesive composition | Achieves most criteria to produce a musical and mainly cohesive composition | Achieves some criteria to produce a partially cohesive composition | Attempts to meet the composition criteria but has difficulties with some elements | Little or no attempt made to meet the composition criteria |
| <b>Creativity</b><br>Student achieves distinct and interesting contrasts between sections using a wide variety of methods          |  |   |  |   |  |
| <b>Harmony</b><br>Student demonstrates ability to choose appropriate chords, to transpose or modulate and use cadence effectively. |  |   |  |   |  |

**COMMENTS:**

---



---



---



---



---



---

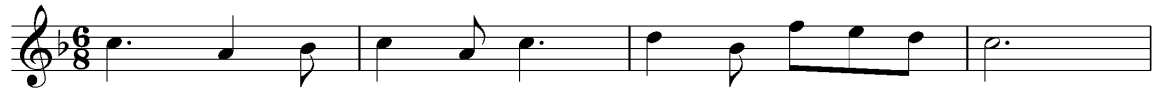
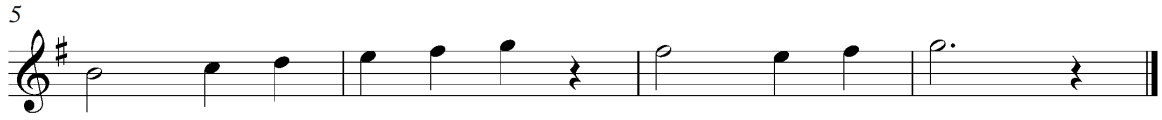


---



---

CHOOSE ONE OF THESE MELODIES FOR YOUR THEME.



Musical score for a piece in 3/4 time, highlighted with a purple border. It consists of two staves. The first staff contains a melody of eighth and quarter notes. The second staff starts with a measure marked '5' and contains a melody with a first ending bracket and a second ending bracket, ending with a double bar line.

Musical score for a piece in common time, highlighted with a cyan border. It consists of two staves. The first staff contains a melody with a slur over the first four measures. The second staff starts with a measure marked '5' and contains a melody with a slur over the first four measures, ending with a double bar line.

Musical score for a piece in 4/4 time with a key signature of three flats, highlighted with a green border. It consists of two staves. The first staff contains a melody of quarter and eighth notes. The second staff starts with a measure marked '5' and contains a melody of quarter and eighth notes, ending with a double bar line.

Musical score for a piece in 3/4 time with a key signature of three flats, highlighted with a blue border. It consists of two staves. The first staff contains a melody with a slur over the first four measures. The second staff starts with a measure marked '5' and contains a melody with a slur over the first four measures, ending with a double bar line.